



EYEsee

Vision for the World

www.eyeseemission.org

Winter 2013 Issue

EYEsee Kicks Off '2013 Campaign'

Campaign Marks EYEsee's 5th Year As International Health Organization

EYEsee rolls out its 2013 Campaign on January 19th-20th with a weekend collection drive at Holy Family parish in Inverness, IL. The 2013 Campaign is EYEsee's fifth annual used eyeglasses collection drive. Janice Guzon, founder and president, has set a goal of 12,000 eyeglasses for the 2013 Campaign. Proceeds from this campaign will supply health missions this year to Haiti, Honduras, Nicaragua, Cambodia, Philippines, Nigeria and Uganda.

Twelve parishes in the Chicago suburbs will be welcoming the eyeglasses

collection campaign. Parish collection drives will be held until June.

Collections will also be held at The University of Chicago's Calvert House & Northwestern University's Sheil Center. They will be joined by elementary and high schools, which will be collecting eyeglasses for the 2013 Campaign as a community service project, as a Lenten mission project or as an EYEsee Chapter initiative. Lexi Glinos leads EYEsee's program for chapter development and campus ministry activities.

EYEsee will again be holding collections at public

offices, including public libraries and village halls. Collections will also be held at several senior homes.

Through the campaign, EYEsee will continue to expand its network of optical clinics, an effort begun last year by Paul Lewis, a Saint Viator junior. Paul will also lead optical clinic collections for the 2013 Campaign.

EYEsee will also be inviting service groups, including Boy Scouts, Girl Scouts, Cub Scouts, community clubs, non-profit groups and charitable organizations to join the 2013 Campaign. EYEsee will expand private office collections this year with many invitations to medium and large corporations to support EYEsee's cause.

Table of Contents

2013 Leadership Team	pg. 2
EYEsee's 'Vision Centers' ..	pg. 3
2013 Missions	pg. 4

GLAMOUR Honors EYEsee President in 2013 Top Ten College Women of the Year Readers' Choice Award

Each year, Glamour magazine features several young women as honorees for their Top College Women of the Year Awards. Founded in 1939, Glamour magazine is currently a major publication that reaches a readership of about 2.37 million worldwide.

For their 2013 Top Ten College Women Readers' Choice Award, Glamour is spotlighting Janice Guzon, Founder & President of EYEsee, on Glamour.com along with seven other top college women. EYEsee is an international health

organization that collects and distributes eyeglasses to the poor in developing countries.

Janice represents The University of Chicago, where she is double-majoring in public policy and sociology.

Beginning January 7th and running through January 25th, the public can cast their vote for EYEsee and Janice on Glamour's website.

Receiving the most votes on Glamour's 2013 Readers' Choice Award Competition will be a significant milestone for EYEsee. It will give EYEsee global exposure,

generating increased public interest about EYEsee's mission and work.

The award from this competition will be used as seed money for EYEsee Vision Centers—a planned project to extend vision missions in developing countries beyond those areas that are currently being served by EYEsee's mission partners. This will be a partnership project between EYEsee and local governments and local communities in the poorest parts of the world. It will address the desperate need for healthcare service to areas that are medically



underserved because of their remote & dangerous locations. It will make ophthalmological service available to the local population year-round.

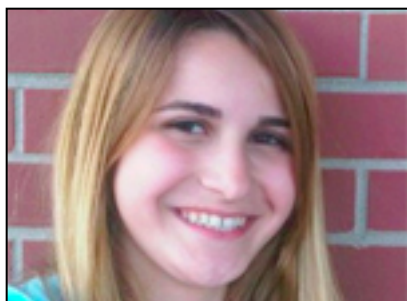
The link to cast your votes for EYEsee can be found on EYEsee's webpage:
www.eyeseemission.org

EYEsee's 2013 Leadership Team



Janice Guzon – *EYEsee President & Founder*

I began EYEsee because I've always felt the call to make a difference in the world. Knowing my friends felt the very same drive, I gathered them together to build and grow EYEsee. My decision to pursue a major in public policy arises from my work in leading EYEsee. My involvement in EYEsee has inculcated in me a deep interest in efforts that lift people from their poverty. I intend to expand on this work and evolve it into my life's work as a social entrepreneur. EYEsee is the work of many hands; it shows what a community of supporters can accomplish together in the fight against global poverty.



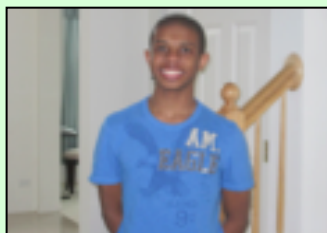
Alexandra Glinos – *EYEsee Leader for Chapter Development*

Lexi leads EYEsee's efforts in building local and national EYEsee chapters. EYEsee chapters are youth teams that replicate the effort of EYEsee in their own churches, schools, and local communities. Chapters support the mission and work of EYEsee.

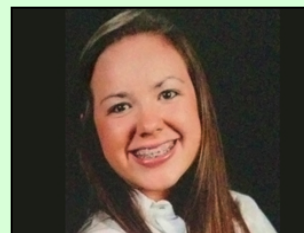
"I am very excited to be a leader of the EYEsee program. I have been wearing contacts and/or eyeglasses for three years. It is a blessing to be able to share the gift of sight to less fortunate individuals."



Peter Glinos
President



Paul Lewis
EYEsee Leader for Optical Clinics



Amanda Esczuk
EYEsee Leader for Senior Homes

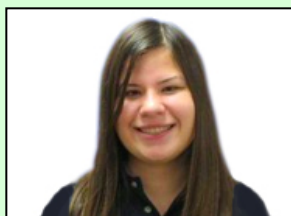


Tristan Blus
EYEsee Co-Leader for Churches

EYEsee 2013 Leadership Team Saint Viator High School Chapter



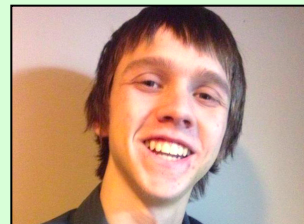
Trisha Aguilar
EYEsee Leader for Service Groups



Amy Sonnicksen
EYEsee Co-Leader for Churches



Vinitha Raj
EYEsee Leader for Public Offices



Brandon Recht
EYEsee Leader for Private Offices

The Vision for EYEsee Vision Centers



This year, EYEsee kicks off the planning phase of its global project to build EYEsee vision centers in developing countries around the world. The need for these centers arises from the fact that there exist many areas in developing countries that have a desperate need for healthcare services but are simply medically underserved because of their remote and dangerous locations. Vision centers will provide them with ophthalmological service.

EYEsee's various mission partners presently undertake overseas missions only once or twice a year at most, and they set up their clinics in urban areas. Word-of-mouth announcements are passed on to communicate information on their arrival and on the clinic venues. Frequently, not enough eyeglasses can be provided by the missions alone to the patients who line up for days to receive eye care & eyeglasses. In many cases, patients are fitted not to their exact prescriptions

but to what eyeglasses are available from the limited inventory of eyeglass supplies that missions are able to carry during their trip. Often, patients in remote areas travel by foot for days to get to the mission clinics.

The EYEsee Vision Center global project aims to address those limitations. It will extend vision missions beyond areas that EYEsee's existing humanitarian partners serve. It will involve partnerships with local governments and local communities, which will have their own share of resources for running the clinics. EYEsee will provide technology to bridge the gap between the needs and resources otherwise inaccessible in those areas. It will ensure that patients receive the eyeglasses they need, and will provide ophthalmological service to the local population year-round.

This global project is complex and requires many partnerships for its successful implementation. Conversations with both local governments and community leaders will be needed to assess area commitment to the project. They will provide the physical space and the volunteer staff who will run the day-to-day activities in the center. EYEsee will supply the technology for prescription measurement and will supply the

requested prescription eyeglasses from EYEsee's central inventory managed through a database that it plans to build.

EYEsee would like to start the conversation about this global project this year. EYEsee hopes that the project will garner significant public interest in order that the necessary resources will become available to move forward with the plans.

EYEsee will be participating in an overseas mission to Honduras in the summer of 2013 to establish local contacts and to survey local situations that will be most benefitted by the vision centers. The time spent during this mission will be dedicated to answering the following questions:

-What infrastructure exists in areas of need that can be utilized to facilitate the distribution of eyeglasses and the provision of eye care?

-What is the need for vision centers?

-Are there clinics in the area already that can be expanded to provide eye care?

-What are the obstacles to providing the local people with eyeglasses and eye care?

The knowledge acquired during this mission will be significant input for the planning activities for this project.

Human Stories from the Missions



"One of the thousands of patients named Helen Tambanillo had a neighbor help lead her to the venue at Purok Riverside, Barangay Tabunan, Bago City. She has been blind all of her life. When the doctor put a pair of trial lenses on her, she did not want to give them back. She was assured that she didn't want the trial frames and lenses, and that she has to have her own. When she received her new glasses and her vision was restored, all she could do was to cry. She cried for over 2 hours. She had all the volunteers, all of the indigents in line and even our bus driver crying like babies. To watch and listen to her description on what she was seeing, you would have had to have been there to capture the entire moment." *-Dr. Jim Weyrich, EyeCare WeCare Foundation*

EYEsee's 2013 Missions



SIUNA, NICARAGUA (JAN 27 – FEB 27, 2013)

This mission will be conducted by the Tufts University Medical School in conjunction with the Bridges to Community, a non-profit community development organization dedicated to meeting the basic needs of people in developing countries through volunteer work. Tufts University School of Medicine partners with Bridges to Community to meet the health care needs of communities in the U.S. and around the world. Tufts University Medical School has been working with Bridges to Community for over five years to run health posts in the Siuna municipality of Nicaragua.

This global health project is to benefit the people of Siuna, Nicaragua. The mission team plans to assess the people's vision with an eye chart as they come to multiple health posts located in Mogallo, Coperna, Tadzana and Campo Uno. Eyeglasses will be distributed based on each patient's need for vision correction.

CAMBODIA (FEB 20 – MARCH 7, 2013)

Cambodian Health Professional Association of America (CHPAA) is EYEsee's partner on vision missions to the poor in Cambodia. CHPAA is a U.S. non-profit humanitarian organization that provides ongoing service and education to medically underserved Cambodians living in the U.S. and Cambodia.

CHPAA sends a team of healthcare professionals for a two-week trip to Cambodia as part of their annual medical mission. They are expecting to treat 3,000 to 4,000 patients during the 2013 mission.



KYANGWALI REFUGEE SETTLEMENT, UGANDA (FEB 2013)



This mission trip will be led by PeopleWeaver, a U.S. non-profit humanitarian organization that provides microcredit loans to women refugees living at the Kyangwali Refugee Settlement in Uganda. This refugee camp has 16,000 people. Most of these women are Congolese widows and orphans caring for other orphans. Although their primary focus is microcredit, aid has also included funding for food, schooling, supplies, medicine, communication tools, and a cooperative grain mill. PeopleWeaver has added eyeglasses to their aid list.

PeopleWeaver also works with small grassroots organizations in rural communities, some are located in northern Uganda. All the women they work with need to be able to see, and this is especially true of the women tailors and the women trying to do small crafts such as

paper necklaces.

LIMON, HONDURAS (MAY 4 – 12, 2013)

This mission will be led by the Carolinas Honduras Health Foundation (CHHF). This non-profit health organization provides free medical, eye and dental care to the poor and needy in Limon, Honduras. The foundation has distributed eyeglasses to the poor in Limon for the past three years. The health team uses near-point cards for reading glasses and focometer for distance.



ETCHE, RIVERS STATE OF NIGERIA (MAY 2013)

This medical mission will be led by Dr. Kanayo E. Ubesie, M.D., president of One World Health Care Inc. (OWHI). OWHI is a non-profit organization that provides medical triage and treatment to indigents in 12 local communities in Nigeria. An experienced optometrist examines patients and distributes eyeglasses free of charge. Last May EYEsee support OWHI's medical mission to Enugu State.